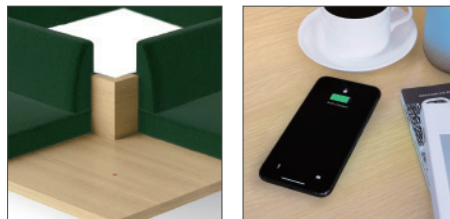


Perch, Island Setting



Product 产品	Width 宽度 (mm)	Depth 深度 (mm)	Height 高度 (mm)	Color 颜色	Material 物料
Perch, Island Setting 回型沙发组合	3000	700	745	51 Fabric Colors, 2 Wood Print Membrane, 1 Membrane and 6 Powder Paint Option 51种布料颜色·2种木纹纸,1种纯色纸及 6种金属喷粉颜色选择	Fabric, Wood Print Membrane, Membrane and Powder Paint 布料·木纹纸·纯色纸和金属喷粉

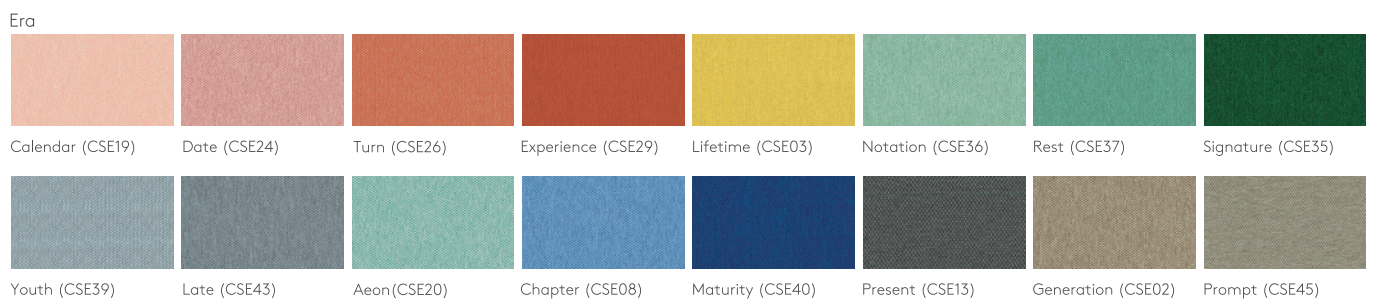


Perch, Island Setting offers power hub or wireless charger for convenient power supply.

Perch 回型沙发组合备有组合电源或无线充电器装置，以便使用。

Material Option 物料选择

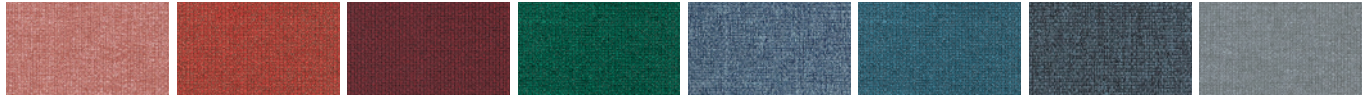
Seat Fabric 座椅布料



Material Option 物料选择

Seat Fabric 座椅布料

Medley

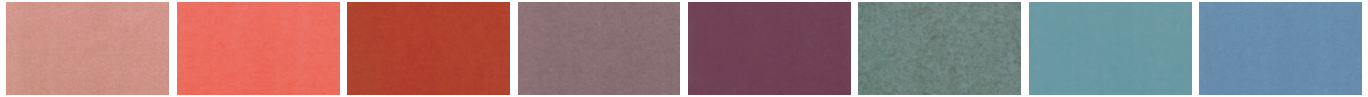


63064 (MD27) 63016 (MD09) 64102 (MD29) 68070 (MD32) 66144 (MD30) 67053 (MD31) 66010 (MD17) 66008 (MD15)



60003 (MD01) 61002 (MD04) 60167 (MD23)

Blazer



Stanford (CUZ2R) Barlborough (CUZ3D) Goldsmith (CUZ39) Scottsdale (CUZ3E) Barnard (CUZ2S) Latymer (CUZ33) Woodcroft (CUZ2Z) Marymount (CUZ3C)



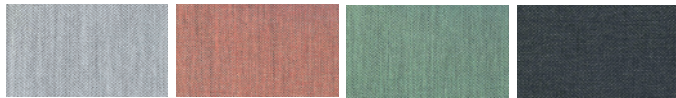
Cardiff (CUZ1N) Glenalmond (CUZ62) Bromegrove (CUZ35) Fairfield (CUZ47) Surrey (CUZ1E)

Silex



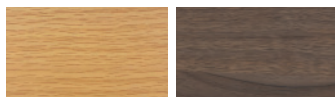
SX02 SX88 SX08 SX53 SX10 SX70 SX30

Vico



VC03 VC41 VC17 VC25

Wood Print Membrane 木纹纸



White Oak (PUK) 白橡木
Walnut (PUW) 胡桃木

Membrane 纯色纸



Warm White (WW)
三分亚光白

Powder Paint 金属喷粉



Warm White (H) 暖白色
Clay (CL) 灰凝土
Stone (ST) 岩灰
Chalk Blue (CB) 天粉蓝
Sage (SA) 香草绿
Ink Black (BL) 墨黑

Remarks 备注:

Color variations may occur on soft copies or printed matters. Please refer to swatch cards or actual product samples for color selection.
颜色可能因电子档或印刷效果而出现差异，当选择颜色时，可参考色卡或真实样本。



Office & Showroom 分行及展厅

Shanghai 上海
Tel: (86) 21 6278 8888

Beijing 北京
Tel: (86) 10 8521 7588

Guangzhou 广州
Tel: (86) 20 3892 2422

Shenzhen 深圳
Tel: (86) 769 8203 1018

Dongguan 东莞
Tel: (86) 769 8203 1111

Hong Kong 香港
Tel: (852) 2828 6888

Singapore 新加坡
Tel: (65) 6817 8750

Customer Service Hotline 客户服务热线

Mainland China 中国大陆
Tel: (86) 800 820 6073 | (86) 400 686 8073

Hong Kong & Asia Pacific 香港及亚太区
Tel: (852) 2828 6000

www.lamex.com